

GENERAL DESCRIPTION

MODEL ATB-60 & ATB-60AL

| | |
|--------------------------------------|------------------------|
| MAXIMUM PLATFORM HEIGHT | 60 FEET |
| WORKING HEIGHT - NOMINAL | 66 FEET |
| HORIZONTAL REACH | 43 FEET-1 INCHES |
| PLATFORM SIZE (STANDARD) | 30 x 60 INCHES |
| WEIGHT (APPROXIMATE) | |
| MODEL ATB-60 | 27,300 POUNDS |
| MODEL ATB-60AL | 24,600 POUNDS |
| UNRESTRICTED PLATFORM CAPACITY | 500 POUNDS |
| TRAVEL SPEED | |
| HIGH | 3.5 M.P.H. |
| MIDDLE | 1.9 M.P.H. |
| LOW | 0.7 M.P.H. |
| TURNING DIAMETER (INSIDE) | 8 FEET-1/2 INCHES |
| OVERALL LENGTH (STOWED) | 29 FEET-1 1/2 INCHES |
| OVERALL WIDTH | 7 FEET-11 1/2 INCHES |
| OVERALL HEIGHT - (STOWED) | 8 FEET-3 INCHES |
| WHEELBASE | 96 INCHES |
| GROUND CLEARANCE | 11 3/4 INCHES |
| TIRES (FOAM FILLED) | FRONT- 15-19.5, 14 PLY |
| TIRES (FOAM FILLED) | REAR - 15-19.5, 12 PLY |
| ELECTRICAL SYSTEM | 12 VOLT DC |
| HYDRAULIC SYSTEM MAX. PRESSURE | 3,000 PSI |

OSHA AND ANSI STANDARDS

The ATB-60 series Snorkelift has been built in so far as we are aware, to conform with OSHA and ANSI Rules and Regulations.

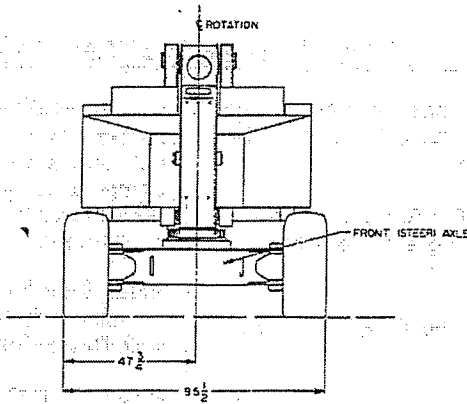
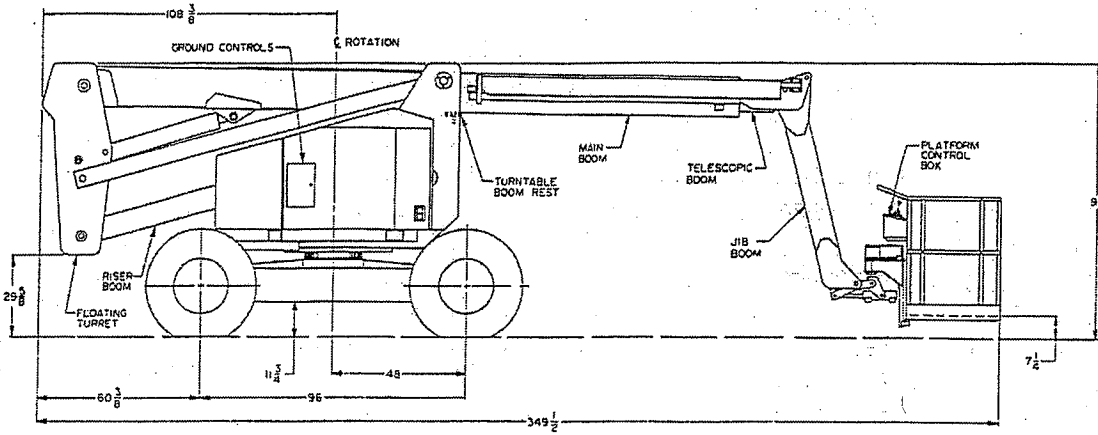
- OSHA Paragraph 1910.67 Title 29, C.F.R. Vehicle-mounted Elevating and Rotating Work Platforms - Labor
- OSHA Paragraph 1926.556 Title 29, C.F.R. Aerial Lifts - Construction
- ANSI Standard A92.5-1992 Boom-Supported Elevating Work Platforms
- CSA Standard CAN 3-B354.4-M82 Boom-Type Elevating Work Platforms

It is imperative that all owners and users of the ATB-60 series Snorkelift read, understand and conform to these regulations. Ultimate compliance to OSHA regulations is the responsibility of the employer utilizing the equipment.

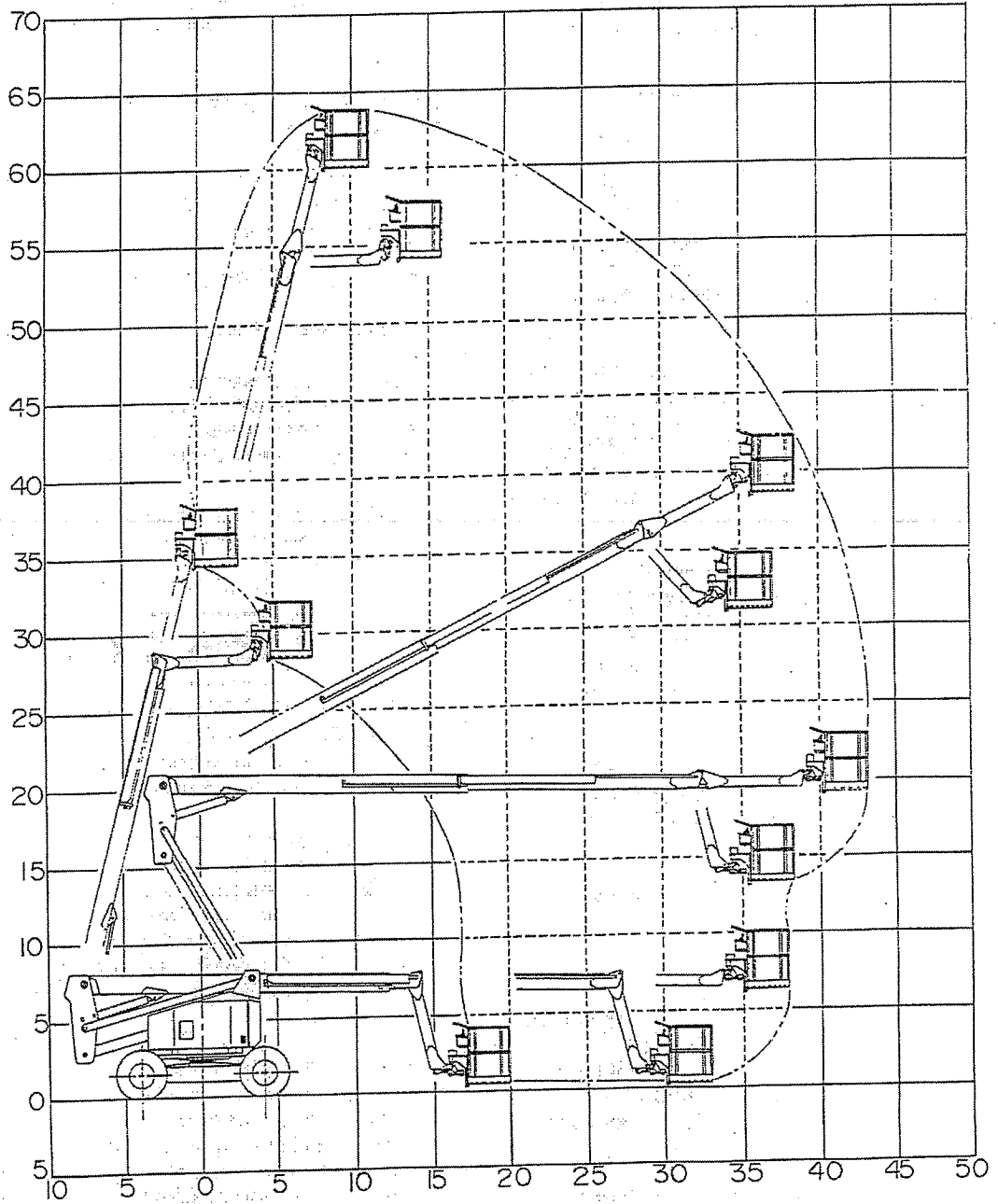
ANSI Standard A92.5-1992 clearly identifies requirements of all parties who may be involved with Boom-Supported Elevating Work Platforms.

A reprint of the Responsibilities of Dealers, Installers, Owners, Users, Renters, Lessors and Operators is available from Snorkel-Economy dealers or from the factory at no cost upon request.

MODEL DRAWING ATB-60



WORKING AREA MODEL ATB-60



EQUIPMENT OPERATING CHARACTERISTICS AND LIMITATIONS

This particular portion of the Operator's Manual contains information concerning the operating characteristics of the controls, time required to attain maximum platform attitude, unrestricted platform capacity and instructions on maintaining stability. These paragraphs should be referred to often. A good understanding of the equipment limitations and capabilities will assure maximum operating efficiency and minimize chances of hazardous operation.

UNRESTRICTED PLATFORM CAPACITY:

| | |
|-------------------------------------|------------|
| 30 x 60 Steel Platform | 500 Pounds |
| 30 x 92 Aluminum Platform | 500 Pounds |
| 30 x 60 Aluminum Platform | 500 Pounds |

The platform capacity is the combined weight of all personnel, their tools and other equipment carried by the platform and within its floor dimensions.

The unrestricted platform capacity above, is applicable in all positions when on a firm, level surface, and includes an adequate safety margin as required by OSHA and ANSI. **DO NOT** diminish this safety factor by overloading. **DO NOT** carry loads from any point outside of the platform floor.

⚠WARNING

Proper stability of unit is based on the standard unit and all of its components as supplied from the factory.

Modification of the unit, either the addition or removal of parts and/or weight, can greatly affect the platform stability and safety.

DO NOT under any circumstances remove any weight from the unit.

STEERING:

Steering is accomplished with dual hydraulic cylinders. The steering axle is not self-centering, therefore, controller handle direction **MUST** be reversed when turn is completed in order to return to straight line travel.

The steering is equipped with mechanical actuated hydraulic valves that are used to down shift the inside drive motor(s) during tight turns if the unit is being driven in high range. The outside drive motor(s) does not down shift. This action reduces tire scuffing and plowing and aids in tight cornering.

DRIVE:

Drive is accomplished with high torque, dual speed hydraulic motor driven planetary wheel assemblies. The ATB-60 series Snorkelift is equipped with spring applied, hydraulic released brakes. These brakes release automatically when drive pressure is applied and lock automatically when drive pressure drops.

DRIVE SPEED - (Boom in stowed, road travel position):

Low speed - Maximum speed of 0.7 MPH on two wheel drive units, and 1.0 MPH on four wheel drive units.

Middle speed - Maximum speed of 1.9 MPH.

High speed - Maximum speed of 3.5 MPH

These drive speed ranges are selected via the 3-position DRIVE RANGE toggle switch in the platform control box, but are also automatically affected by other control system interactions:

- High speed range is engaged only when the DRIVE CONTROLLER is held in the full forward position. The range system shifts automatically to MID range whenever the

⚠CAUTION

DRIVE CONTROLLER is positioned less than 80% forward or at any reverse direction position even when the DRIVE RANGE switch is in high speed.

- High speed range is interrupted whenever the machine is operated on an incline that exceeds 5 degrees slope angle. The range system shifts automatically to MID range on slopes exceeding 5 degrees even when the DRIVE RANGE switch and DRIVE CONTROLLER are in high speed forward position.
- DRIVE RANGE switch control and maximum travel speed are interlocked through a limit switch that senses the main boom position at the turntable boom rest and a limit switch that senses the retracted position of the telescopic boom. Elevating the main boom off the turntable boom rest or extending the telescopic boom from its retracted position automatically causes the drive range system to downshift and the maximum engine speed to be reduced. (See Drive speed - Boom elevated).

EQUIPMENT OPERATING CHARACTERISTICS AND LIMITATIONS

DRIVE SPEED (Continued):

⚠WARNING

DO NOT tie back, block or in any way override the operation of the boom limit switches. **NEVER** operate the ATB-60 series Snorkelift in elevated or extended boom positions unless the boom limit switches are functioning properly.

- HI and MID speed ranges must be used **ONLY** when traveling on smooth, level surfaces. The possibility of losing control of the machine on rough terrain and sloped surfaces is amplified in these speed ranges because travel speed may be too fast and the drive system has less capacity to control speed and stop smoothly than in **LOW RANGE**.

⚠CAUTION

ALWAYS slow down and shift drive system to **LOW RANGE** before traveling over rough terrain or any sloped surface.

DRIVE SPEED - (Boom elevated):

When Main boom is elevated off of turntable boom rest, drive speed on level surface is reduced to a maximum of 0.7 MPH automatically. Speed may be further reduced and controlled by metering the drive controller

⚠CAUTION

ALWAYS bring machine to a stop before raising Main or Riser booms from stowed position to avoid a sudden speed change from faster drive speed to the 0.7 MPH elevated-boom speed.

BOOM OPERATING TIMES: (APPROXIMATE)

Riser Boom Elevation

Raise cycle..... 24-30 seconds
Lower cycle 16-20 seconds

Main Boom Elevation

Raise cycle..... 40-45 seconds
Lower cycle 40-45 seconds

Jib Boom Elevation

Raise cycle..... 9-12 seconds
Lower cycle 7-11 seconds

Telescopic Boom

Extend cycle..... 30-38 seconds
Retract cycle 30-38 seconds

Turntable Swing

Full rotation cycle 85-95 seconds

TURNTABLE SWING:

Turntable swing, is 360° continuous rotation in either direction.

PLATFORM ROTATION:

Platform rotation is accomplished with a reversible electric motor/pump and hydraulic rotary actuator that allows for rotation range of 180° total, (90° each side of center).

ENGINES:

Continental model TM27, 4 cylinder liquid cooled gasoline engine, with manufacturer's rating of 71.5 horsepower.

Ford model LSG-423, 4 cylinder liquid cooled gasoline engine, with manufacturer's rating of 63 horsepower.

Cummins model 4B3.9, 4 cylinder liquid cooled diesel engine with manufacturers rating of 76 horsepower.

Hatz model 4L31C, 4 cylinder air cooled diesel engine with manufacturers rating of 57 horsepower.