

# Model G9-43A

## TELEHANDLER




### Performance

Rated Capacity	9,000 lb	4,082 kg
Maximum Lift Height	43 ft	13.1 m
Load at Max Height	7,000 lb	3,175 kg
Maximum Forward Reach	30 ft 6 in.	9.3 m
Load at Max Reach	1,200 lb	544 kg
Frame Leveling	10°	
Lift Speed (boom retracted)		
Up	12.5 sec	
Down	8 sec	
Boom Speed (extended/retracted)		
Extended	15 sec	
Retracted	7 sec	
Top Travel Speed (4-Speed)	20 mph	32 kph
Drawbar Pull (loaded)	19,200 lb	8,709 kg
Outside Turning Radius	12 ft	3.66 m
Operating Weight	26,780 lb	12,147 kg

### Standard Specifications

#### Engine

Make and Model	Cummins QSB3.3L ATAAC	
No. of Cylinders	4	
Displacement	202 cu in.	3.3 L
Gross Power Basic	100 hp	75 kW
Maximum Torque @ 1600 rpm	306 lb-ft	414 Nm
Fuel Tank Capacity	38 gal	141 L

#### Transmission

- Powershift with torque converter.
- 4-speed forward and 3-speed reverse.

#### Axles

- Trunnion mounted planetary steer axles.
- Integral steer cylinder.
- High bias limited slip differential on front axle.

#### Brakes

- Service brakes are inboard wet disc brake on front and rear axles.
- Parking brakes are wet disc spring-applied hydraulic release on front axle.

#### Tires

- Standard 370/75-28
- Optional Foam-Filled or Solid

#### Cab

- Certified ROPS/FOPS structure
- Adjustable seat
- Horn

#### Steering 4-Wheel

- Power steering with manual backup.
- Operator selectable 4-wheel circle, 4-wheel crab, 2-wheel front.

#### Instruments

- Volt meter
- Hourmeter
- Engine oil pressure gauge
- Fuel gauge
- Temperature gauge

### Hydraulic System-Implement

Capacity	40 gal	151.4 L
----------	--------	---------

- Tandem gear pump.
- Auxiliary hydraulics used for all attachments equipped with cylinders or other hydraulic components.

### Standard Features

- Enclosed Cab
- Auxiliary Electrics
- Road Lights
- Air Conditioning
- Work Lights
- Rotating Beacon
- Pintle Hook
- Fenders
- Brick Guard
- Arctic Package
- Hydraulic Quick Switch

### Attachments

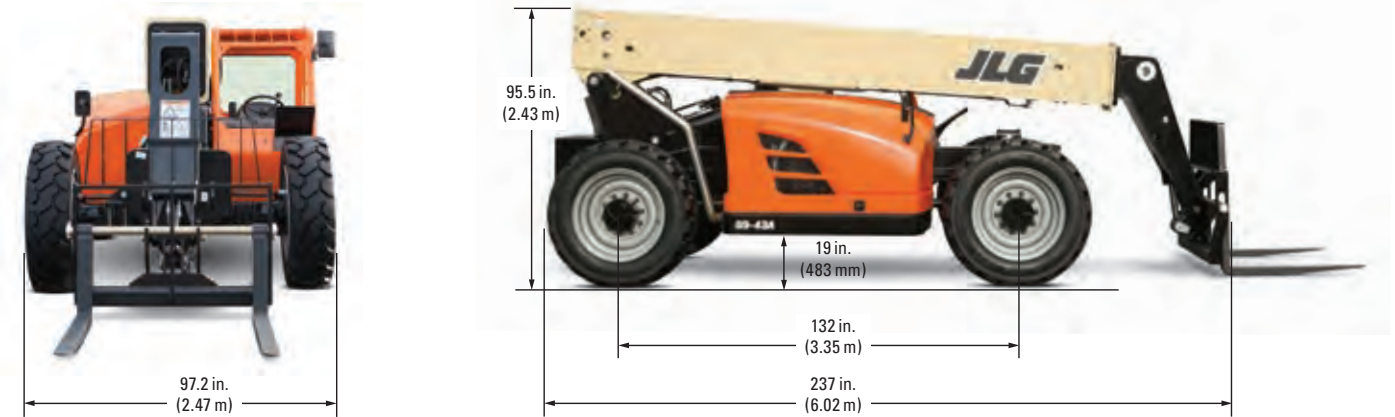
Standard Carriage	50 in. 60 in. 72 in.	1.3 m 1.5 m 1.8 m
Side-Tilt Carriage	50 in. 60 in. 72 in.	1.3 m 1.5 m 1.8 m
Swing Carriage (90°)	72 in.	1.8 m
Dual Fork Positioning Carriage		
Side-Shift Carriage	50 in.	1.3 m
Tower	8 ft (2.4 m)	
Pallet Forks	50 in. (1.3 m) Standard or Side-Tilt Carriage*	
	2.36 in. x 4 in. x 48 in.	60 mm x 102 mm x 1.2 m
	2.36 in. x 5 in. x 48 in.	60 mm x 127 mm x 1.2 m
	2.00 in. x 6 in. x 72 in.	51 mm x 152 mm x 1.8 m
Lumber Forks	1.75 in. x 7 in. x 60 in.	44 mm x 178 mm x 1.5 m
	2.36 in. x 6 in. x 60 in.	60 mm x 152 mm x 1.5 m
Cubing Forks	2 in. x 2 in. x 48 in.	51 mm x 51 mm x 1.2 m
Fork Extensions	90 in.	2.3 m
Material Bucket	72 in., 1.0 cu yd	1.8 m, 0.76 m <sup>3</sup>
	96 in., 1.5 cu yd	2.4 m, 1.15 m <sup>3</sup>
	102 in., 2.0 cu yd	2.6 m, 1.53 m <sup>3</sup>
Grapple Bucket	96 in., 1.75 cu yd	2.4 m, 1.34 m <sup>3</sup>
Truss Boom	12 ft, 2,000 lb	3.7 m, 907 kg
	15 ft, 2,000 lb	4.6 m, 907 kg
	12 ft with winch, 2,000 lb	3.7 m, 907 kg
Fork Mounted Work Platform	8 ft, 1,000 lb capacity	2.4 m, 455 kg capacity
Lifting Hook		

\* Requires auxiliary hydraulics

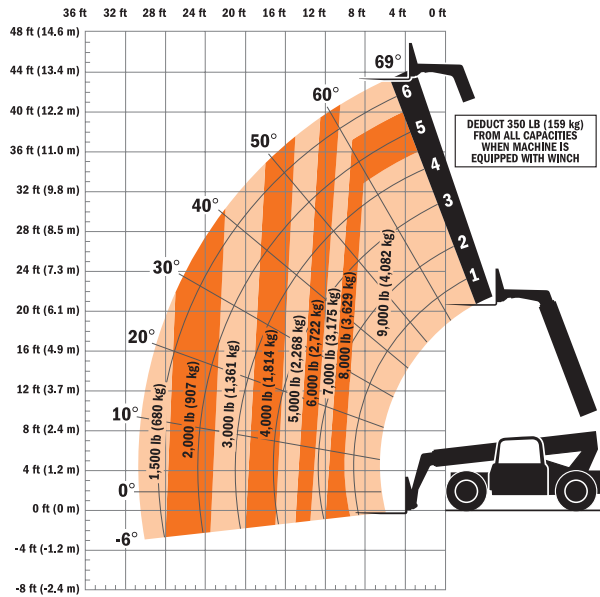
# Model G9-43A TELEHANDLER

## Dimensions

All dimensions are approximate.



## Load Chart and Dimensions



## IMPORTANT

Rated lift capacities shown are with machine equipped with carriage and pallet forks. The machine must be level on a firm surface with undamaged, properly inflated tires. Machine specifications and stability are based on rated lift capacities at specific boom angles and boom lengths. (If specifications are critical, the proposed application should be discussed with your dealer.) DO NOT exceed rated lift capacity loads, as unstable and dangerous machine conditions will result. DO NOT tip the machine forward to determine the allowable load. Use only JLG approved attachments with proper material handler model/attachment load capacity charts displayed in the operator's cab. OSHA requires all rough terrain forklift operators be trained according to OSHA 29 CFR 1910.178 (1).

Due to continuous product improvements, JLG Industries reserves the right to make specification and/or equipment changes without prior notification. This machine meets or exceeds ASME B56.6-1998 as originally manufactured for intended applications.

Form No.: SS-G943A-0104-15M  
Part No.: 3132208  
R101205  
Printed in USA



**JLG Industries, Inc.**  
1 JLG Drive  
McConnellsburg, PA 17233-9533  
Telephone 717-485-5161  
Toll-free in US 877-JLG-LIFT  
Fax 717-485-6417  
[www.jlg.com](http://www.jlg.com)

**An Oshkosh Corporation Company**